

THIN RC 355 ELECTRIC WALL SUPPORT



Important
Wichtig
Important
Belangrijk
Importante
Importante
Important
Important
Viktigt
Ważne
Важно
Důležité
Dôležité
Fontos
Önemli
Important

Для монтажу необхідно 2 людини Important

Важливо
重要
重要



2 persons required
Zwei Personen erforderlich
Nécessite deux personnes
2 personen
Se precisan dos personas
E' richiesta la presenza di due persone

Requer duas pessoas
Två personer erfordras
Konieczne dwie osoby
Нужны два человека
Montáž vyžaduje 2 osoby
Montáž vyžaduje 2 osoby
Két személy szükséges
Iki kişi gerekli

Este nevoie de două persoane
Для монтажу необхідно 2 людини
Необходими са двама души

二人作業
需要两个人員操作



Move forward from wall

Press and key at the same time.

Move towards wall

Press and key at the same time.

AUTO HOME

Press ones

Swivel left

Press

Swivel right

Press

Set M1 (or M2)

Press or for 5 sec. to memorize the position

Move to M1 (or M2) position

Press or (screen moves to Mem1 or Mem2 position)

Caution **Caution**

This is for in-store demos only !

Start Demo
(This function is optional)

Press and key at the same time for 5 sec.

Stop Demo
(This function is optional)

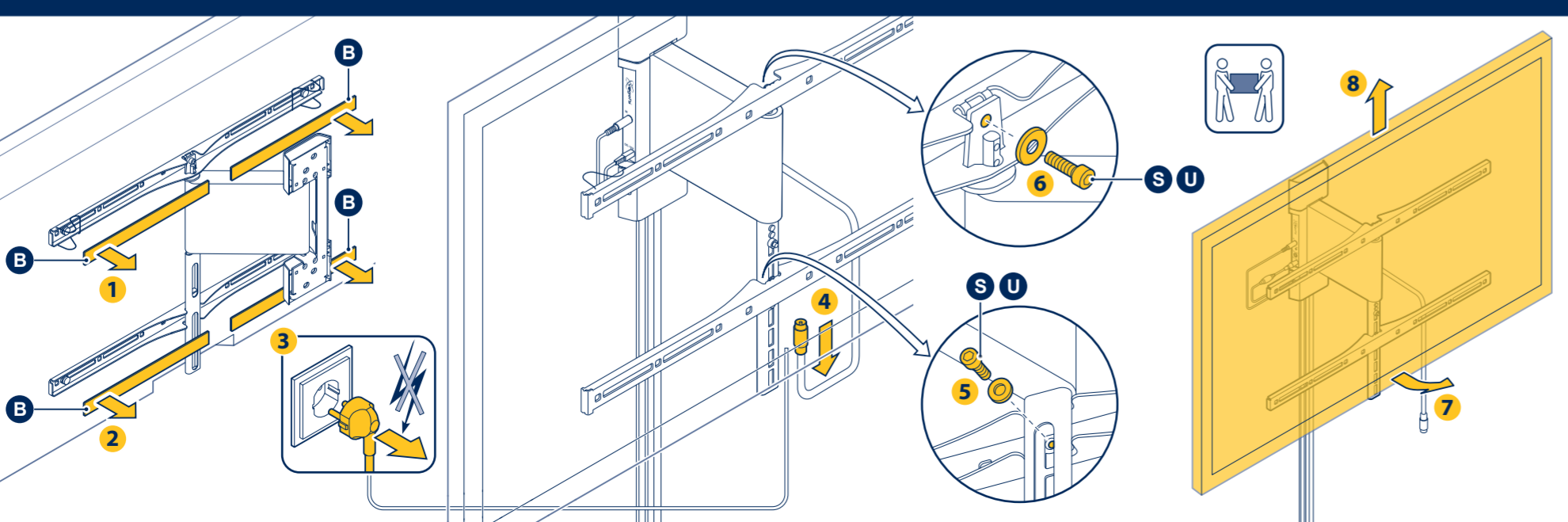
Press and key at the same time.

DONE

REMOVE TV FROM WALL MOUNT

- TV von Wandhalter nehmen
- Retirer le téléviseur du support mural
- TV van muursupport afhalen
- Quite el televisor del sistema de montaje en la pared
- Rimozione della TV dal sistema di fissaggio a parete
- Retire a TV do suporte da parede
- Avlägsna TV:n från väggmonteringen
- Zdejmij telewizor ze ściennego uchwyty
- Снятие телевизора с устройства для настенного крепления

- Sejmuti televizoru z držiaku na stěnu
- Zvesenie televizora z držiaka na stenu
- A TV eltávolítása a falitartóról
- TV'yi duvar dayanağından çıkartın
- Îndepărtați televizorul de pe suportul de perete
- Зняття телевизора з кронштейна на стіні
- Откачане на телевизора от стойката за стена
- テレビをウォールマウントから取り外す
- 将电视机(TV)从墙架上取下



PARTS INCLUDED

- 4x A, 4x B, 4x C, 4x D, 4x E, 4x F, 4x G, 4x H, 4x I, 4x J, 4x K, 4x L, 4x M, 4x N, 3x P, 4x Q, 1x R, 2x S, 1x T, 2x U, 1x V, 1x W, 1x X, 1x Y, 1x Z

TOOLS REQUIRED NOT INCLUDED

- Ø 5 mm, Ø 10 mm, Ø 13/64", Ø 25/64"
- Ø 5 mm, Ø 13/64"

1 1.1

1.2

3

4

2

2

BE AWARE OF TV-SCREEN HEIGHT!

Center line TV

OPTIONAL EFA 8740/8741

5 5.1

2

2

BE AWARE OF TV-SCREEN HEIGHT!

Center line TV

5.2

6 6.1

6.2

1

Set swivel left limit (Swivel TV to the left just before the wall)

Press [Left Arrow]

Max. limit

Press [Home] for 5 sec (The position is memorized as the maximum "Left" swivel limit. The TV won't swivel over this position)

2

Set swivel right limit (Swivel TV to the right just before the wall)

Press [Right Arrow]

Max. limit

Press [Home] for 5 sec (The position is memorized as the maximum "Left" swivel limit. The TV won't swivel over this position)